

EL DORMITORIO

el dormitorio



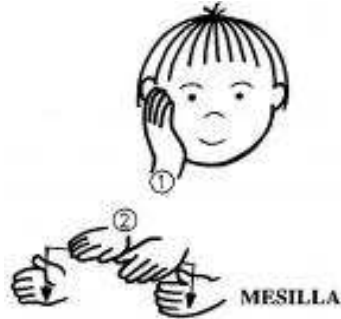
CAMA

cama



MESILLA

mesilla



ARMARIO

armario



CUNA

cuna



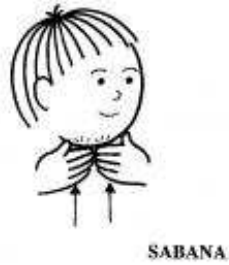
ALMOHADA

almohada



SABANA

sábana



MANTA

manta



Lee y copia:



cama



mesilla



armario



cuna



almohada



sabana



manta

Escribe el nombre:















Une:



Sabana

Cuna

Manta

Mesilla

Armario

Cama

Almohada



Escribe la letra que falta:

_ama



_AMA

me_illa



ME_ILLA

arma_io



ARMA_IO

cun_



CUN_

almoha_a



ALMOHA_A

sab_na



SAB_NA

m_nta



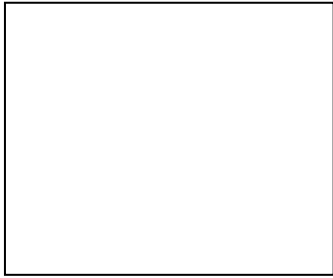
M_NTA

Busca muebles en la sopa de letras:

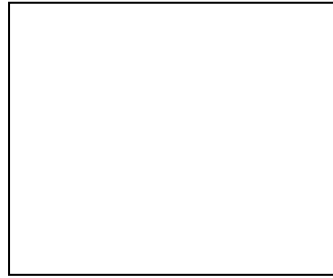
puerta suelo cama luz baranda
cristal mesilla armario florero
corbata cenicero mesa silla cuna
mesita mar cielo calamar almohada
pájaro Sábana cartel sueño manta
mango techo sol sardina culebra luz

➤ Copia las palabras que has encontrado en la sopa de letras:

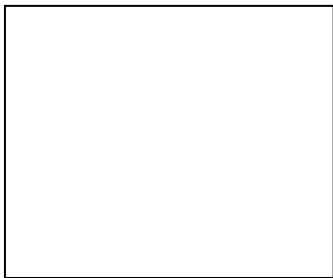
Dibuja las palabras:



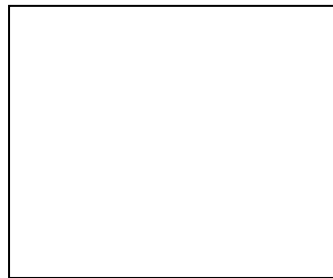
La mesilla



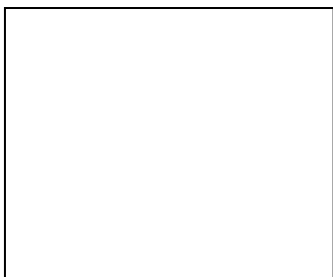
la cama



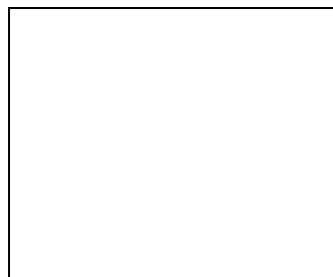
la cuna



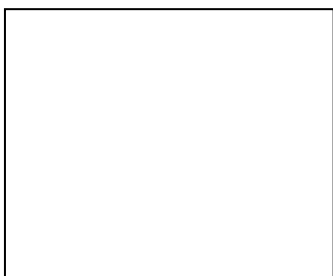
el armario



la almohada



la sabana



la manta

